

BEPC Race Course: "Starfish" 2.8 miles

Sails Buoy

Big Rock

White Fender

Red Nun 4

North end of Elks Pilings

Standard Start

Green Nun 7

Red Nun 6

Ray's Breakwater

Day Marker

Red Nun 10

Yellow temp

Bay breakwater marker

Starfish (2.8 miles)

1. Standard start south
2. Left turn at Big Rock
3. Left turn at White Fender
4. Right turn at red nun #4
5. Stay west of red nun #6
6. Left turn at red nun #10
7. Stay right of Ray's breakwater
8. Right turn at the North end of Elks pilings to finish



**BEPC Race Course:
"Sitting Duck"
2.36 miles**

Sitting Duck (2.36 miles)

1. Standard start facing south
2. Right turn at yellow temporary buoy South of Ray's breakwater
3. Stay inside Ray's breakwater heading North
4. Right turn at the North end of Elks pilings
5. Soft right turn at yellow temp buoy
6. Right turn at red nun #10
7. Stay West of red nun #6
8. Left turn at red nun #4
9. Left turn white fender
10. Right turn at North end of Elks pilings to finish



BEPC Race Course: "Lefts then Rights" 2.25 miles

Sails Buoy

Big Rock

White Fender

Red Nun 4

North end of Elks Pilings

Standard Start

Green Nun 7

Red Nun 6

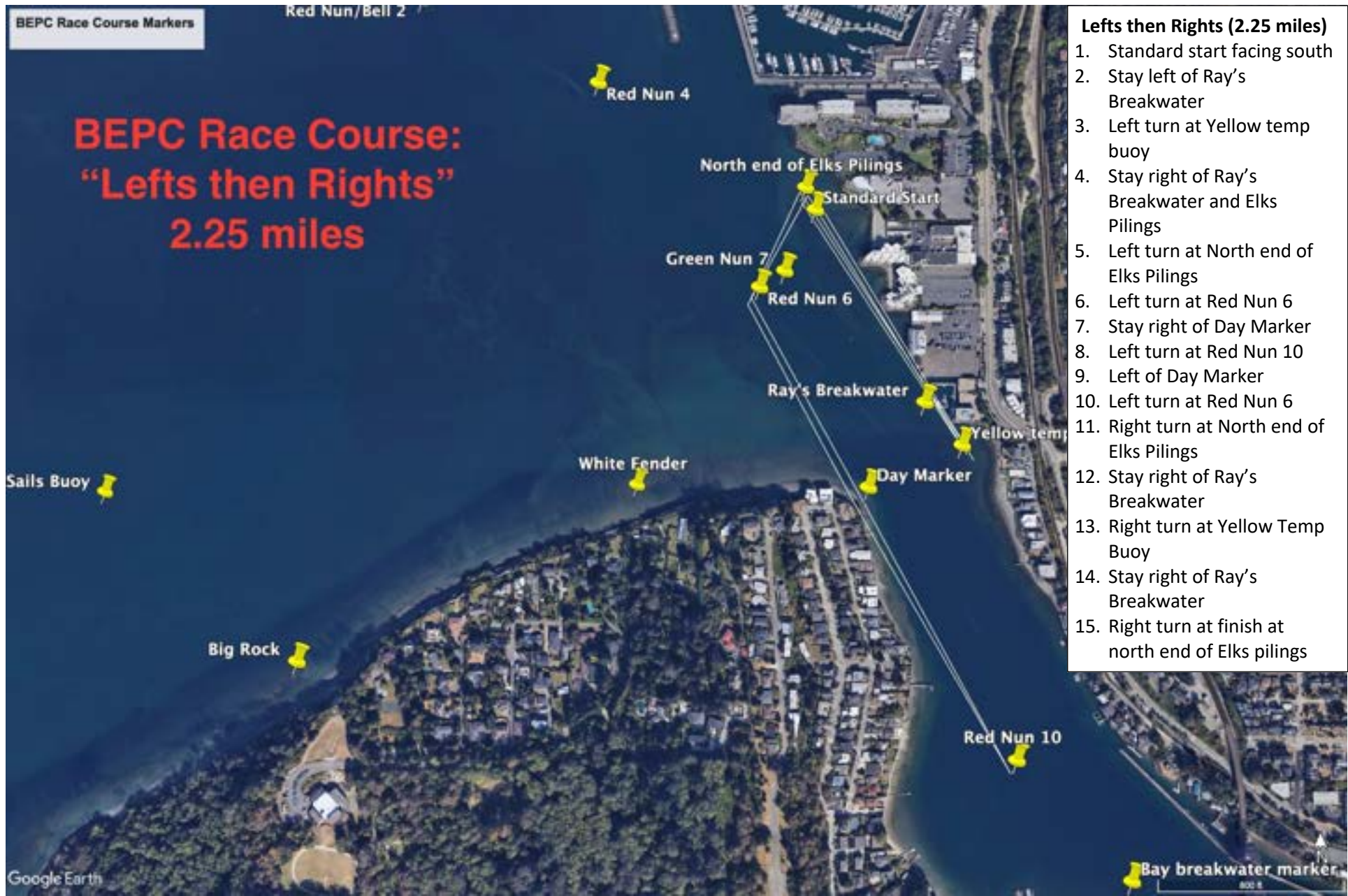
Ray's Breakwater

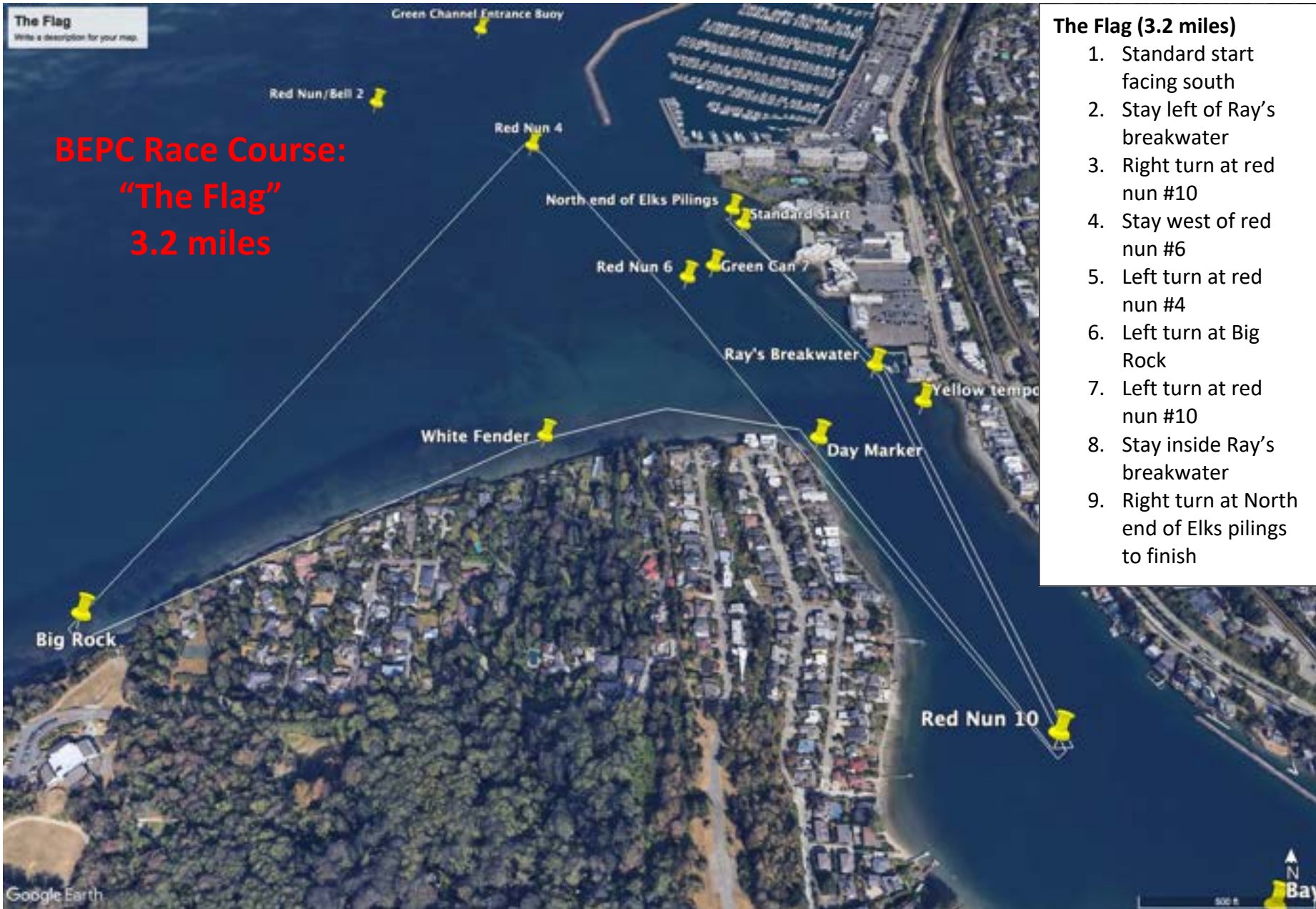
Day Marker

Red Nun 10

Yellow temp

- Lefts then Rights (2.25 miles)**
1. Standard start facing south
 2. Stay left of Ray's Breakwater
 3. Left turn at Yellow temp buoy
 4. Stay right of Ray's Breakwater and Elks Pilings
 5. Left turn at North end of Elks Pilings
 6. Left turn at Red Nun 6
 7. Stay right of Day Marker
 8. Left turn at Red Nun 10
 9. Left of Day Marker
 10. Left turn at Red Nun 6
 11. Right turn at North end of Elks Pilings
 12. Stay right of Ray's Breakwater
 13. Right turn at Yellow Temp Buoy
 14. Stay right of Ray's Breakwater
 15. Right turn at finish at north end of Elks pilings





BEPC Race Course: "Deep V" 3 miles

Sails Buoy

Big Rock

White Fender

Red Nun 4

North end of Elks Pilings

Standard Start

Green Nun 7

Red Nun 6

Ray's Breakwater

Day Marker

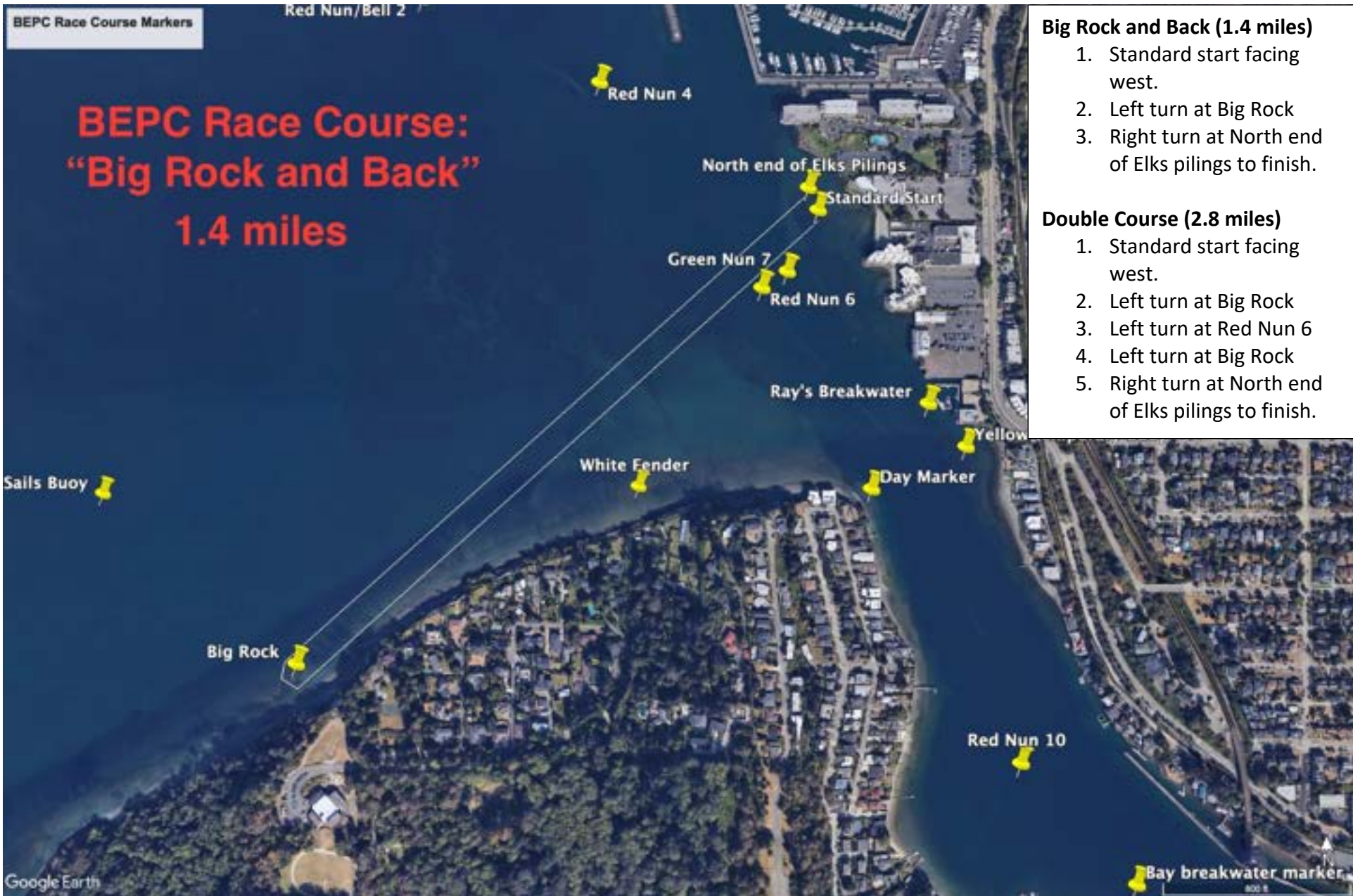
Yellow tempo

Red Nun 10

Deep V (3 miles)

1. Standard Start facing south
2. Stay left of Ray's Breakwater
3. Left turn at Yellow Temp Buoy
4. Stay right of Elks pilings
5. Left turn at North end of Elks pilings
6. Stay left of Ray's breakwater
7. Right turn at Yellow temp buoy
8. Right turn at Red Nun 10
9. Stay left of Red Nun 6
10. Left turn at Red Nun 4
11. Stay right of Red Nun 6
12. Left turn at Red Nun 10
13. Left turn at Yellow temp buoy
14. Left turn at North end of Elks pilings
15. Right turn at Yellow temp buoy
16. Right turn at North end of Elks pilings to finish

Bay breakwater marker



BEPC Race Course: "Big Rock and Back" 1.4 miles

Big Rock and Back (1.4 miles)

1. Standard start facing west.
2. Left turn at Big Rock
3. Right turn at North end of Elks pilings to finish.

Double Course (2.8 miles)

1. Standard start facing west.
2. Left turn at Big Rock
3. Left turn at Red Nun 6
4. Left turn at Big Rock
5. Right turn at North end of Elks pilings to finish.



Boomerang
Write a description for your map.

BEPC Race Course: "Boomerang" 2 miles

- Boomerang (2 miles)**
8. Standard start facing west
 9. Right turn at red nun #6
 10. Left turn at red nun #4
 11. Left turn at Big Rock
 12. Right turn at red nun #4
 13. Left turn at red nun #6
 14. Right turn at North end of Elks pilings to finish



Bow & Arrow
Write a description for your map.

**BEPC Race Course:
"Bow & Arrow"
1.7 miles**

Bow & Arrow (1.7 miles)

- 9. Standard Start facing west
- 10. Left turn at red nun #6
- 11. Right turn at red nun #10
- 12. Left turn at red nun #6
- 13. Right turn at white fender
- 14. Right turn at red nun #4
- 15. Left turn around red nun #6
- 16. Right turn around North end of Elks pilings to finish

BEPC Race Course: "Butcher Knife" 1.65 miles

- Butcher Knife (1.65 miles)**
7. Standard start facing south
 8. Stay left of Rays Breakwater
 9. Right turn at Red Nun 10
 10. Right turn at Day Marker
 11. Left turn at Ray's Breakwater
 12. Right turn around North end of Elks pilings to finish



Double Big Rock

Write a description for your map.

BEPC Race Course: "Double Big Rock" 2.8 miles

Green Channel Entrance Buoy

Red Nun/Bell 2

Red Nun 4

Standard Start
North end of Elks Pilings

Red Nun 6
Green Can 7

Double Course (2.8 miles)

1. Standard start facing west.
2. Left turn at Big Rock
3. Left turn at Red Nun 6
4. Left turn at Big Rock
5. Right turn at North end of Elks pilings to finish.

Ray's Breakwater

White Fender

Day Marker

Big Rock

Google Earth

Image copyright: Google